



## Chapter 9

# Drug Interdiction and Anti-Drug Addiction Center

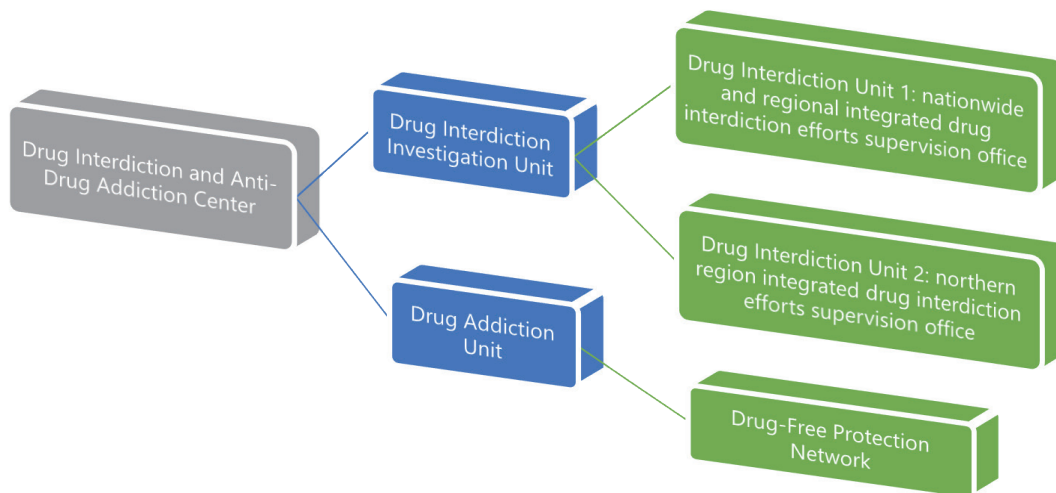


### I. Preface

Drugs are addictive and there are many diverse modes of addiction, which are highly recurring, causing tremendous damage to individuals, families and societal dimensions through recidivism, loss of function and aberrant departure from the social order. Our Office not only endeavors to integrate regional efforts at assiduously combating drug crime, to reduce recidivism rates among the drug population, but moreover our Office places a tremendous emphasis on ensuring all District Prosecutors' Offices afford opportunities for addiction treatment with deferred drug prosecutions. To implement the Ministry of Justice plan as submitted to and approved by the Executive Yuan for the New Era in Anti-Drug Strategic Efforts Initiative (phase 2) which added the Establishing Recidivism Prevention Plan, focusing on the drug addict problem, and aiming to stave off recurrence, and reduce recidivism. From throughout the investigation phase we offer thoroughgoing protection, to strengthen individualized attention, integrating governmental inter-agency resources, under direction of the Chief Prosecutor to establish our Office's Drug Addiction Treatment Special Unit, aiming to integrate resources to offer addiction treatment, family assistance, judicial juvenile treatment, probation protection, social supports, and counseling.

The Unit was established with two main objectives: First, to integrate District Prosecutors' Office deferred prosecutions to allow for addiction treatment options. Second, in response to imminent measures taking effect pursuant to amendments of Article 24 of Narcotics Hazard Prevention Act, which will mean that future deferred prosecution procedures and processes will become more complex, with guidance manuals issued to District Prosecutors' Offices and the necessity of planning new training and education.

## II. Administrative office allotment



Drug Interdiction and Anti-Drug Addiction Center Administrative Office Allotment